

Century Aluminum Railings

Distinctive, durable, long lasting beauty.

Simple to install,
easy to enjoy...



We give your
deck a whole new
feeling.

Outdoor Living Solutions

Upgrade your deck... and your view!



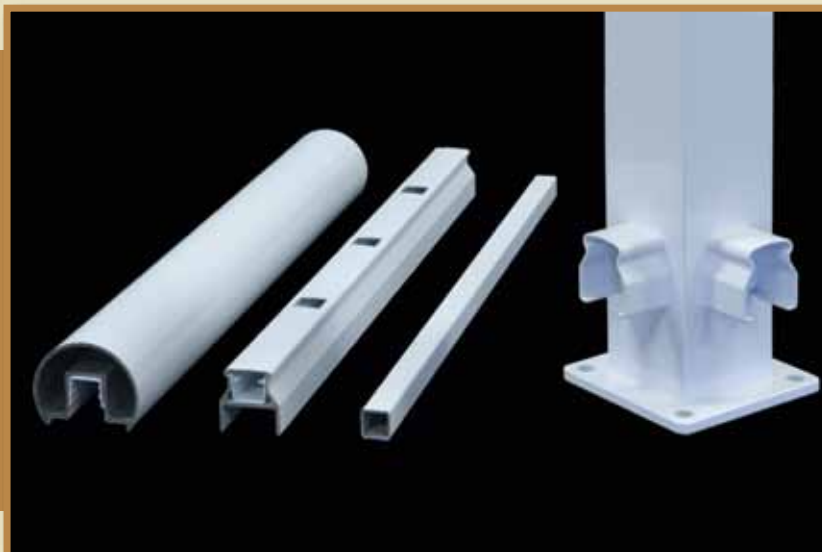
Century Railings offers the perfect choice for the Low-Maintenance Lifestyle you prefer.

The proven quality and ease of installation make Century Railings the preferred choice by homeowners. Our durable Premium Powder Coated finish makes maintenance a thing of the past. For the best value in aluminum railing, Century railings are your ideal choice.

For design ideas visit our website at www.centuryaluminuminc.com.

Exclusive Features

- Easy, quick snap installation
- 50% faster install time
- No exposed welds
- Recessed smaller caps
- Heavy duty construction



- Contemporary round top design
- Continuous bottom rail look
- Radius milled pickets
- 2 1/2" square posts
- Powder coated quality

Outdoor Living Solutions

Maximize your viewing pleasure.

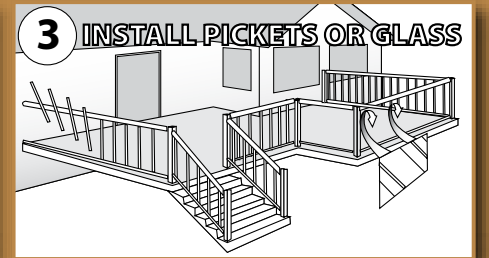
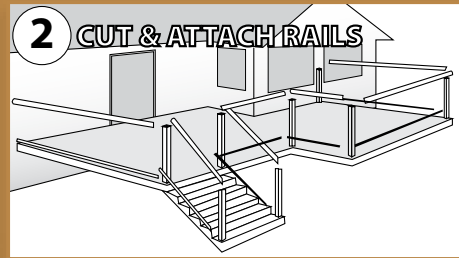
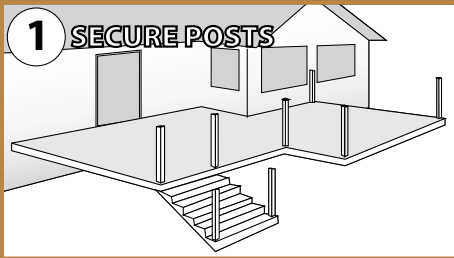


Introducing our new **Scenic Series** topless glass railing. We have eliminated both the top and bottom rails to allow for an unobstructed and panoramic view. Celebrate your view no matter where you kick back on your deck.

The **Scenic Series** can be transitioned into our standard century railing with a simple connection detail. Get the best of both worlds.



Installs in 3 Easy Steps



Tools And Materials Required:

- Mitre Saw/Hacksaw
- Safety Glasses/Gloves
- Dish Soap (Glass Application)
- Cordless/Electric Drill
- 3/8 Hex Head Driver for Lag screws
- Robertson #10 square Bit
- Rubber Mallet
- Tape Measure
- 5/16" Drill Bit
- 1/8" Drill Bit
- Level

Follow these detailed steps to install your aluminum railing:**1) Post Location**

Locate the posts at equal intervals along the outside of deck. It is recommended to start from one end of deck adjacent to house. Use one lag screw to loosely secure post to deck. Temporarily leave lag screw head approximately 1/2" above post base plate. It is advised to pre-drill all holes on deck with 1/8" bit. Blocking may be required with some types of composite and wood decking.

Cutting Top and Bottom Rails

With posts/base plates flat on deck measure distance between posts (for accuracy, take inside measurement between both posts at bottom), subtract 1/2" from total measurement, and cut top rail.

Position and hold bottom rail against posts/base plates, near lower post brackets. Centre pre-punched bottom rail to ensure equal spacer distance from each side to post. Mark or scribe top of bottom rail at each end in line with side of post. Subtract 1/4" from each mark on bottom rail and cut both ends. Centre bottom rail support bracket under rail for support. Bottom rail supports are packaged with all top and bottom rails. A minimum of one support is required for each section (at least one every four feet). Position bottom rail into both lower post sleeves. You may need to remove the lag screw and move posts slightly to allow smooth fit of bottom rail into lower post sleeve. Replace lag screw. Install top rail into one end of the post sleeve and tilt the other post to position top rail into the opposite sleeve. Plumb and level posts. Install and secure remaining lag screws into base plates. Use # 10 X 3/4" self-tapping screws to secure through top and bottom rails into sleeves. (Use Robertson square bit for # 10x 3/4 " screws.) When installing Century Railings in high salt content areas apply one coat of urethane caulking to any cut or exposed area on top or bottom rail ends and other components that have been cut or drilled.

NOTE: Drill three 1/4" holes along bottom rail at 3 ft. intervals for drainage. Repeat this procedure for each section of railing.

2) Picket Installation

In each package, you will find the corresponding number of pickets for the rail lengths. Insert one picket into centre of pre-drilled bottom rail; angle picket up into top rail and plumb. Insert spacer clips on each side of centre picket. Repeat this procedure (picket-spacer-picket-spacer) until three pickets are left on either side. Install remaining pickets as a group; separate and secure with spacers. If necessary, cut last spacers to fit. Use mallet to adjust pickets. We advise the vinyl inserts in the pickets not be removed during installation. Removal of vinyl inserts will result in excessive wind noise and vibration of pickets.

3) Glass Installation

Ensure you have correct top and bottom rails with black glass gasket. Begin by repeating step #1. When top/bottom rails are secured, place two rubber support blocks down into bottom rail. Place them approximately 6 to 12 inches in from each post. Using gloves and safety glasses, hold glass firmly on each end and slide glass up into top gasket cavity, then down into bottom gasket (resting on rubber blocks). This procedure will be easier if you apply a small amount of dish soap along top and bottom of glass. It is always advisable to have two people to install glass panels and remeasure all distances between posts and prior to installing. Code allows 4" maximum space between edge of glass to post.

NOTE: Picket braces may be secured to posts or pickets for additional support. This applies to both picket and glass applications and will depend on decking substrate being used.

4) Stair Application for Swivel Brackets

(Refer to detailed swivel bracket instructions in package).

Swivel brackets are used for both stair inclines and custom posts/stair angles. Bottom rail should be approximately 1" above stair nosing. Mount top and bottom posts at proper locations on stair treads. Mount round backing plate to posts, keeping a distance of 30" between top and bottom round backing plates. Secure with #10 X 3/4" self-tapping screws. Ensure two holes in backing plates are vertical before securing. Slide end cap into backing plate. Mark hole locations and drill through side of backing plate with 5/16" bit. Secure with 1-1/4" X 1/4" lock nut and bolt. It is advised to pre-drill all holes with a 1/8" bit prior to using larger drill bits. Measure top and bottom rail and cut to required length. Insert pickets as in step 2. For stair top and bottom rails, you will need to use the shorter stair pickets. They come with 4-7/8" spacers to that a space of 4" is maintained between pickets in stair inclines, as required by the building code.

NOTE: Final position of upper and lower posts on stair treads will determine overall height of top rail and distance off bottom rail off nosing. Distance between tread nosing and top rail should not be less than 34" or greater than 38". Stair railing should be assembled on site.

Using Swivel Brackets for Custom Angles

(Refer to detailed swivel bracket instructions in package).

Using swivel brackets, measure up 1-3/4" from post base plate to bottom of round backing plate and attach to post. Ensure two holes in backing plates are horizontal before securing in place. Keeping a distance of 36-1/4" between backing plates, attach top round backing plate using # 10 X 3/4" screws. Mark hole location as in step 4, drill and secure with 1-1/4" X 1/4" lock nut and bolt.

5) Gates

Gates are adjustable to fit an opening of up to a 48" wide. They may be adjusted by removing end post and cutting top and bottom rails to desired width. Use #10 X 3/4" self-tapping screws to secure rails into post sleeves. Allow 2" for hinges and 1-1/2" for latch. Repeat picket assembly as in step #2. It is not advised to install glass in gates. Installation guide included in gate package.

6) Wall Brackets

Wall brackets can be used to attach top and bottom rails to existing walls or posts. To locate bottom wall bracket on wall, measure up 2-1/4" from deck to bottom of bracket. To mount top wall brackets to a wall, measure up 40-1/8" from deck to bottom of top bracket. Secure with 2" - 3" wood screws enclosed in package. To mount wall brackets to aluminum posts secure with #10 x 3/4" self-tapping screws.

Mounting Wall Brackets on 36" High Posts or Walls

To mount bottom wall bracket, measure up 2-1/4" from deck to bottom of bracket. Centre on post and secure with # 10 x 3/4" self tapping screws. To mount top wall bracket, measure up 34-1/4" from deck to bottom of top rail bracket. Centre on post and secure with # 10 x 3/4" self tapping screws. Follow instructions in step 2 to install stair spindles.

When installing 36" high railings the intermediate stair posts and posts at the bottom of stairs should be 42" high not 36" high posts.

* When securing posts with lag screws, ensure lags penetrate a minimum of 2"-3" of solid wood or blocking. It is the sole responsibility of the Homeowner/Contractor to comply with all local building codes. * Century Railings are designed for residential applications. * Picket and Glass Railings to be a max of 6 ft. between posts. Contact Us: 1.888.493.1103. It is recommended to layout and confirm all dimensions, and parts prior to cutting and installing the railing system.